

RUBBER SUPPORT FEET

FREDDOX FOOT



Freddox foot are designed to support AC outdoor units, heat pump units condensing units, pipe work, duct work or cable tray.

By their geometry and recycled rubber and high quality polyurethane conception including moisture and UV treatment, the freddox feet minimize the vibrations transmission as the load onto the floor of the site.

The standard aluminium channel securely anchored to the top allows for mechanical fixing of standardized bolts and channel nuts for easy method of fixing.

Features

Suitable for indoor and outdoor applications from -20 to +80°C

Moisture and UV resistant

40 x 20 mm Fixing channel in aluminum alloy 6060

>10 years long life time performance proven by salt mist test conducted in accordance with ASTM B117-11

Material :

- Aluminum alloy 6060
- Rubber crumb foot : SBR recycled rubber BS 7188 and 5696-3
- Salt mist testing : BS EN 60068-2-52
- Test KB severity 1

Maximum foot pressure : 20 kN/m²

Uniformly Distributed Load (UDL) : 7.5 kN/m²

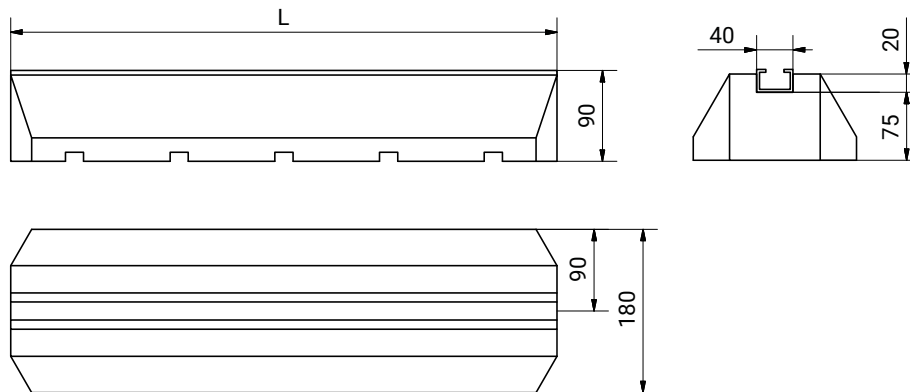
Extrusion tolerances according to EN 12020-2

M8 x 30 easy to fix screws included with set

TECHNICAL DATA

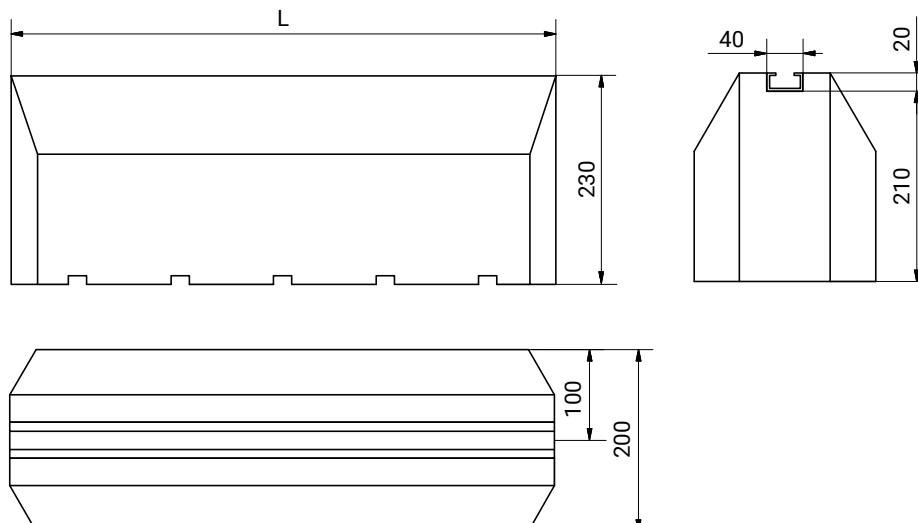
Freddox support set

MODEL	BRIC CODE	L (mm)	DESIGN UNIT LOAD (kg)	WEIGHT (kg)
Foot 400	4401-400MMSETFR	400	200	3,9
Foot 600	4401-600MMSETFR	600	300	5,5
Foot 1000	4401-1000MMSETFR	1000	400	9



Freddox high support

MODEL	BRIC CODE	L (mm)	DESIGN UNIT LOAD (kg)	WEIGHT (kg)
Foot 600 High	4401-600MMHIFR	600	300	16
Foot 1000 High	4401-1000MMHIFR	1000	400	25



Manufacturer reserves the right to change any product specifications without notice.. Ref. : 4401-Foot_2210_EN